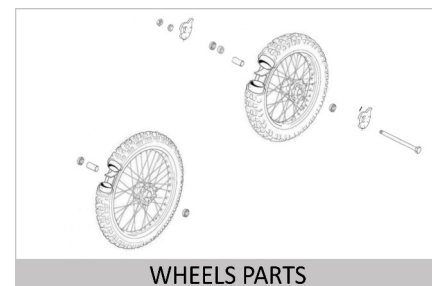
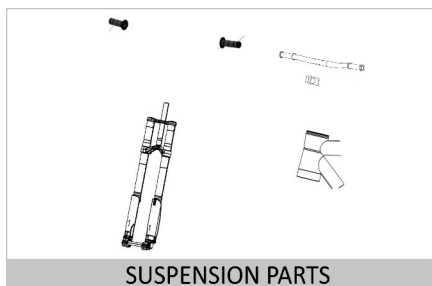
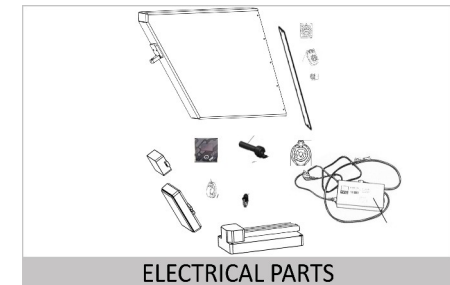
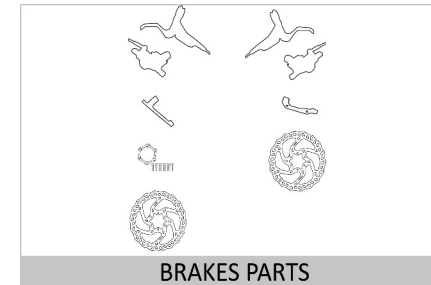
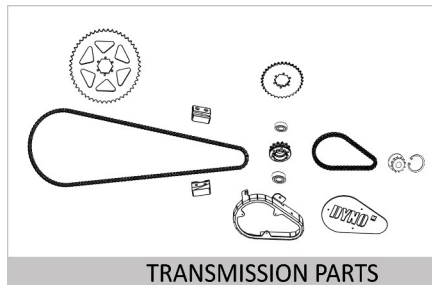
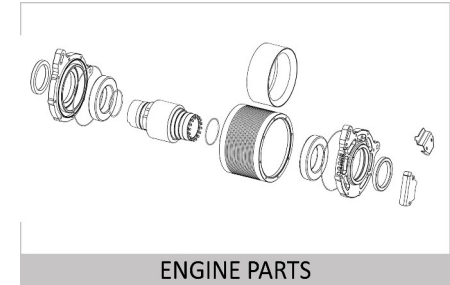
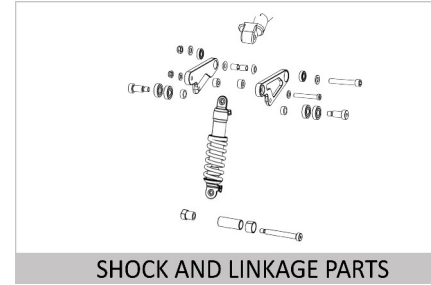
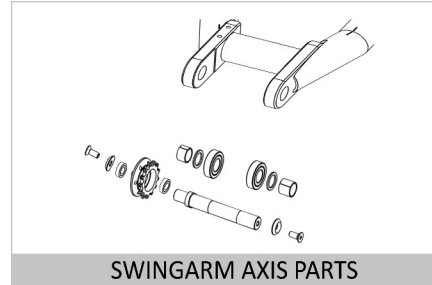
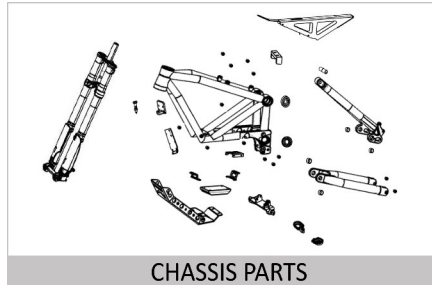


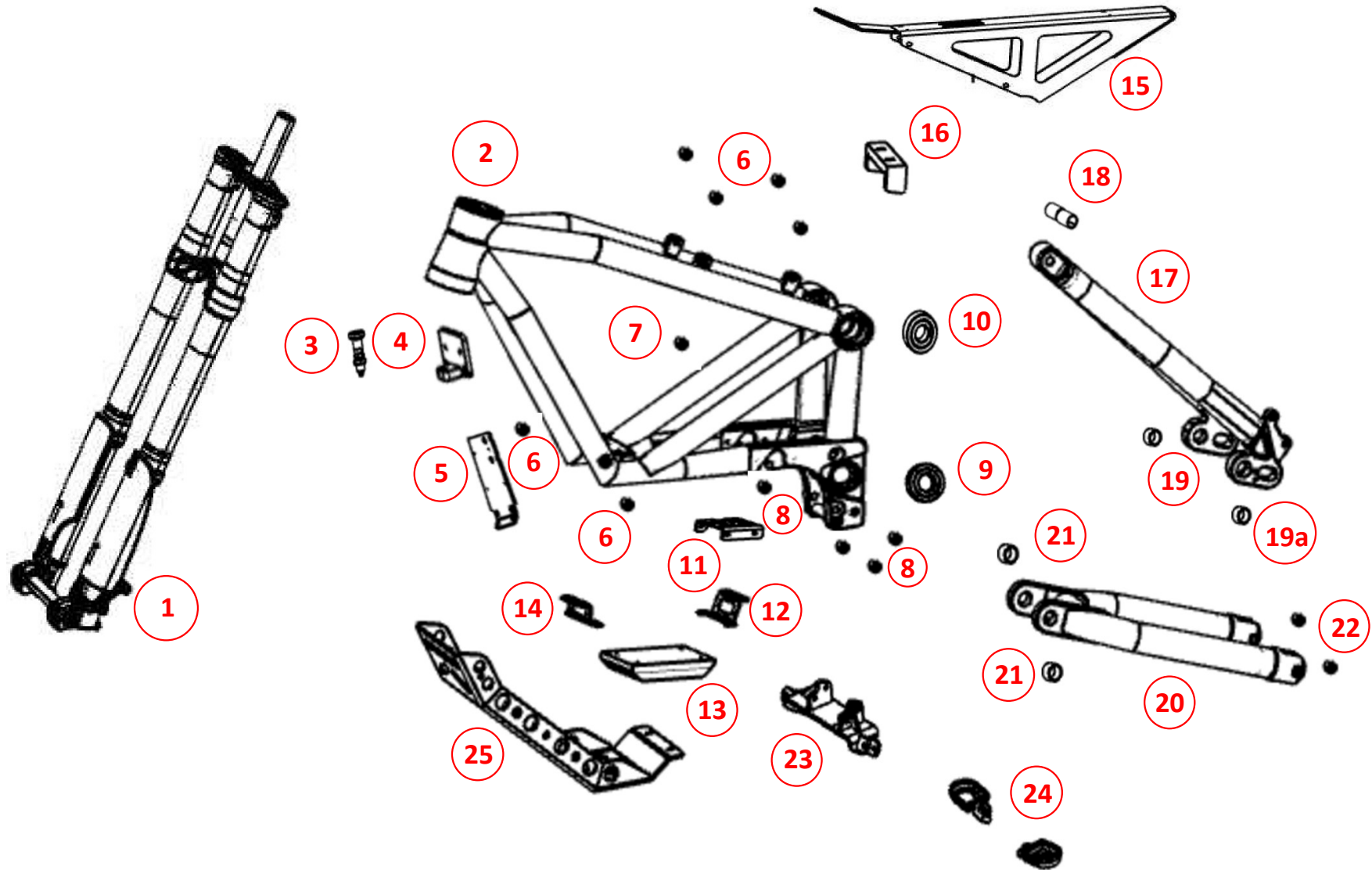


DYNO M 2024

SPARE PARTS CATALOGUE

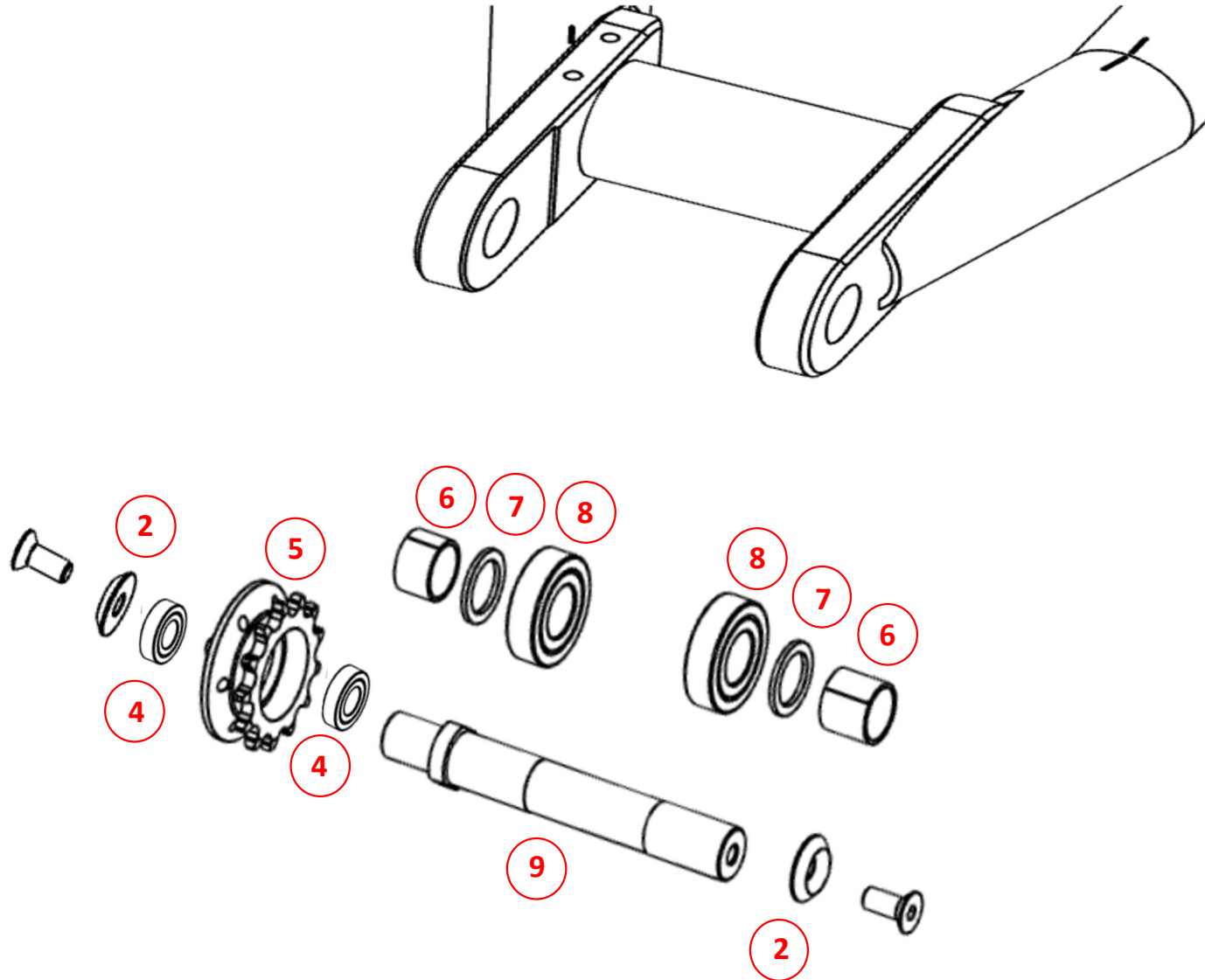


CHASSIS PARTS



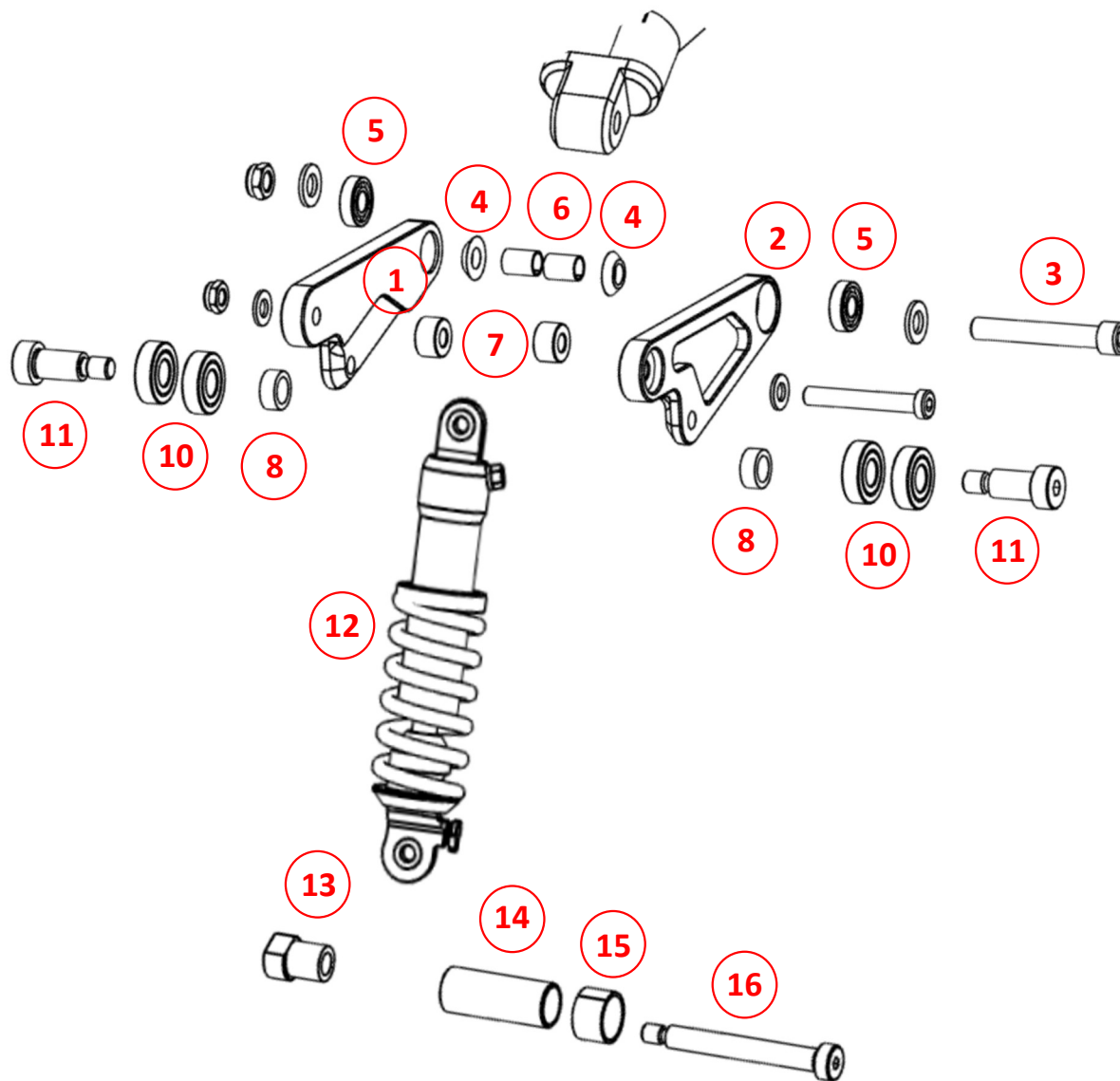
CHASSIS PARTS			
No.	Part No.	Description	Quantity needed
1	RC200005	FRONT FORKS MANITOU DORADO COMP 37MM	1
2	DYC100000	FRAME DYNO M	1
3	DYC100320	BATTERY BOX FRONT LOCK	1
4	DYC100300	FRONT BATTERY BRACKET	1
5	DYC255200	BIKE CONTROL UNIT BRACKET	1
6	ENSATM6	THREADED INSERT M6	6
7	DYCKU0812	ENGINE BOLT SLIDING BEARING	1
8	ENSATM8	THREADED INSERT M8	3
9	RC100151	SWINGARM AXIS BEARING	2
10	DYC100130	ROCKER BOLT BEARING	4
11	DYC100200	BOTTOM BATTERY BRACKET	1
12	DYC600300	COOLER BRACKET REAR	1
13	DYC600500	CONTROL COOLER	1
14	DYC600200	COOLER BRACKET FRONT	1
15	DYC100500	SEAT SUBFRAME	1
16	DYC100600	UPPER BATTERY BRACKET	1
17	DYC350600	SWINGARM UPPER	1
18	DYCKU1220	SLIDING BEARING	2
19	RC350150	SWINGARM BEARING	4
19a	DYC500160	SWINGARM BEARING WASHER	4
20	DYC350100	SWINGARM LOWER	1
21	DYCKU2015	SLIDING BEARING	2
22	ENSATM10	THREADED INSERT M10	2
23	DYC110000	FOOTREST HOLDER	1
24	RC110001	FOOTREST KIT	1
25	DYC100800	ENGINE PROTECTOR	1

SWINGARM AXIS PARTS



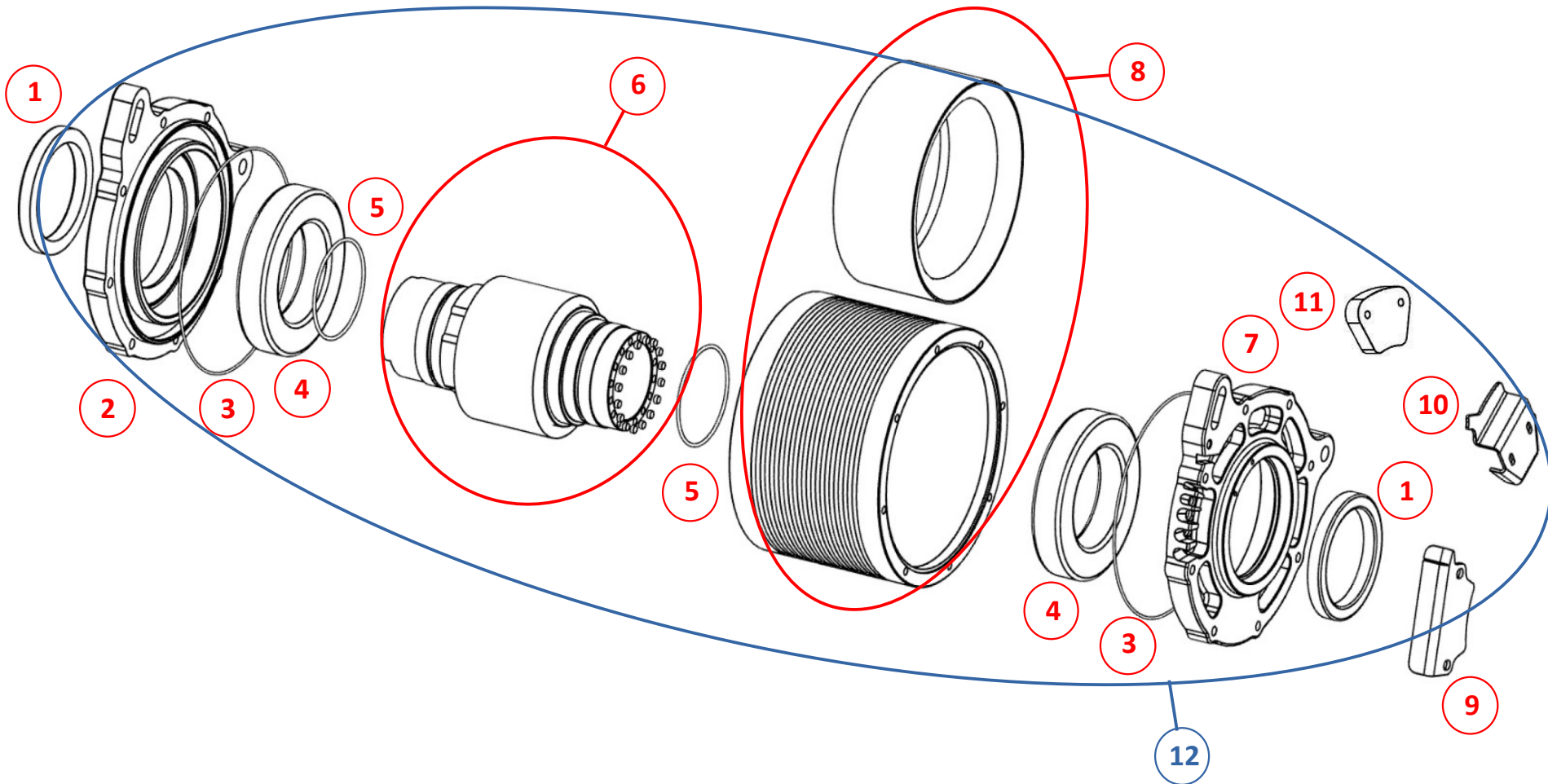
SWINGARM AXIS PARTS			
No.	Part No.	Description	Quantity needed
2	DYC700100	WASHER	2
4	RC700150	BEARING	2
5	RC700400	MAIN GEAR FRONT SPROCKET	1
6	DYCKU2015	SLIDING BEARING	2
7	DYC700150	WASHER	2
8	RC100151	BEARING	2
9	DYC700000	SWINGARM AXIS	1

SHOCK AND LINKAGE PARTS



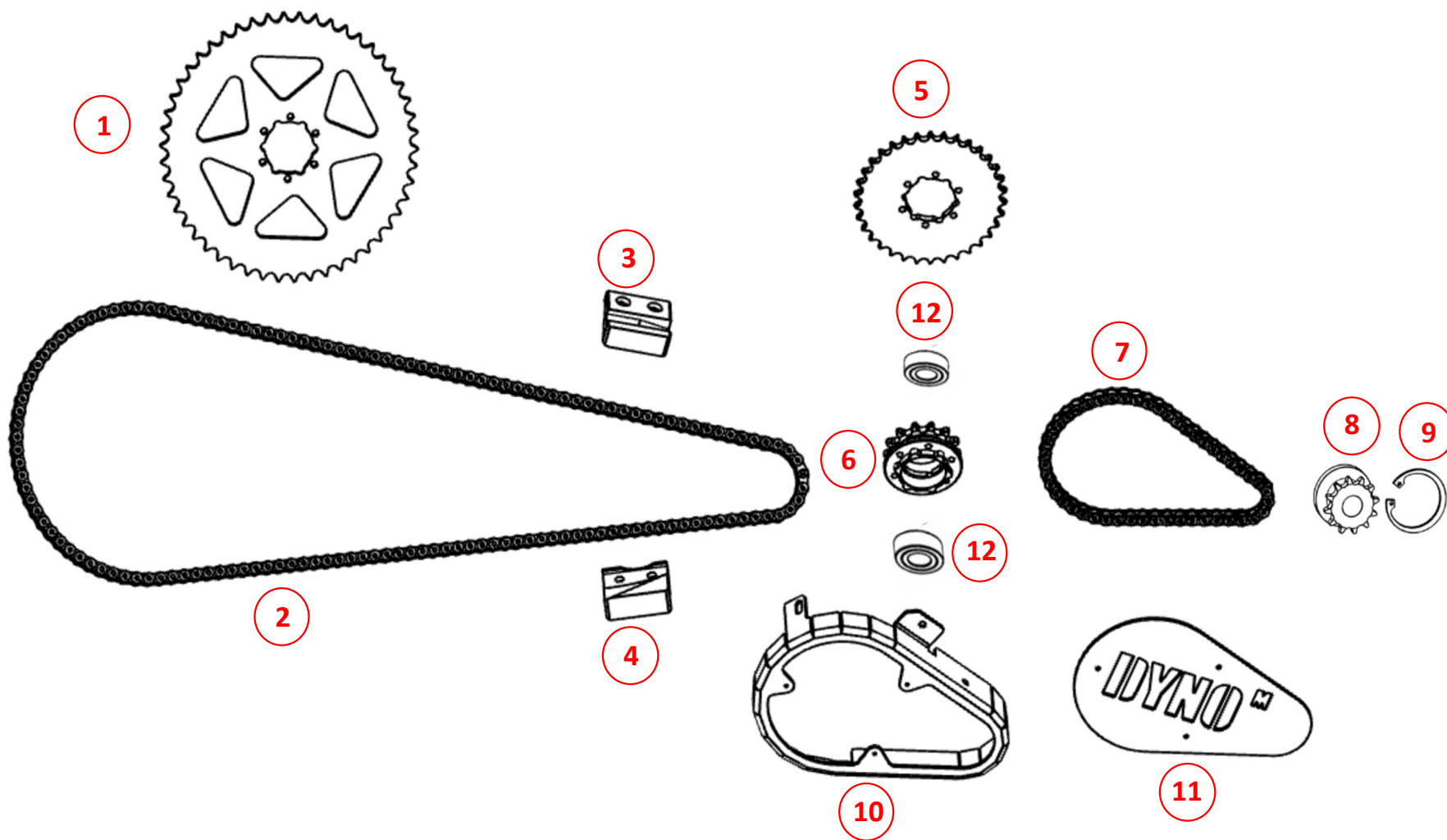
SHOCK AND LINKAGE PARTS			
No.	Part No.	Description	Quantity needed
1	DYC300200	ROCKER ARM RIGHT	1
2	DYC300100	ROCKER ARM LEFT	1
3		BOLT M10X80 DIN 7984 (AVAILABLE ONLY IN BOLT'S KIT)	1
4	DYC300150	ROCKER BEARING SPACER	2
5	DYC300130	BEARING	2
6	DYCKU1220	SLIDING BEARING	2
7	DYC310100	REAR SHOCK UPPER SPACER	2
8	DYC301000	ROCKER ARM SPACER	2
10	DYC100130	BEARING	4
11	DYC302000	ROCKER ARM SPECIAL BOLD	2
12	RC310000	REAR SHOCK	1
13	DYC310300	REAR SHOCK BOTTOM NUT	1
14	DYC310200	REAR SHOCK BOTTOM SPACER	1
15	DYCKU2020	SLIDING BEARING	1
16	DYC310350	SPECIAL BOLT	1

ENGINE PARTS



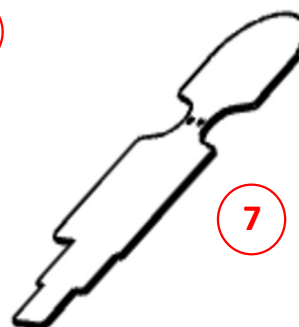
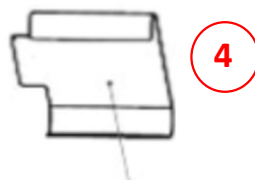
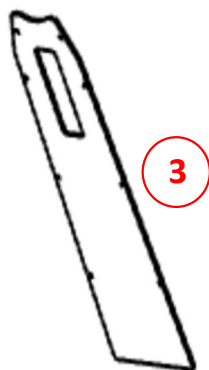
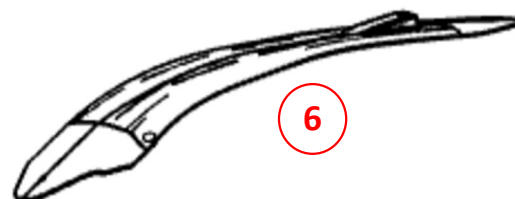
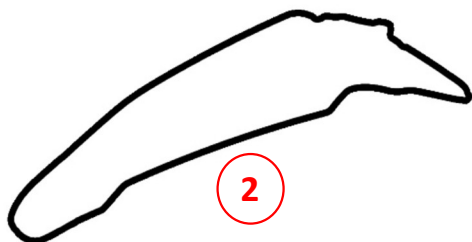
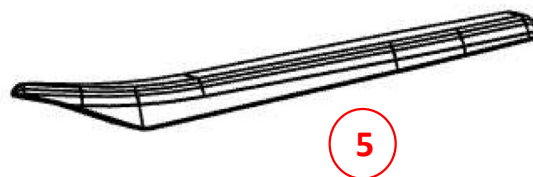
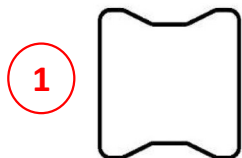
ENGINE PARTS			
No.	Part No.	Description	Quantity needed
1	RM500203	ENGINE AXIS SEAL	2
2	RM500202	ENGINE RIGHT SIDE COVER	1
3	RM500204	ENGINE COVER O-RING	2
4	RM500198	ENGINE BEARING	2
5	RM500150	ENGINE AXIS O-RING	2
6	DYM500800	ENGINE AXIS WITH ROTOR	1
7	DYM500210	ENGINE LEFT SIDE COVER	1
8	DYM500900	ENGINE SHELL WITH STATOR	1
9	DYM505000	ENGINE WIRES COVER	1
10	DYM600300	ENGINE HALL SENSOR COVER	1
11	DYE600300	HALL SENSOR KIT	1
12	DYM500000	COMPLETE ENGINE	1

TRANSMISSION PARTS



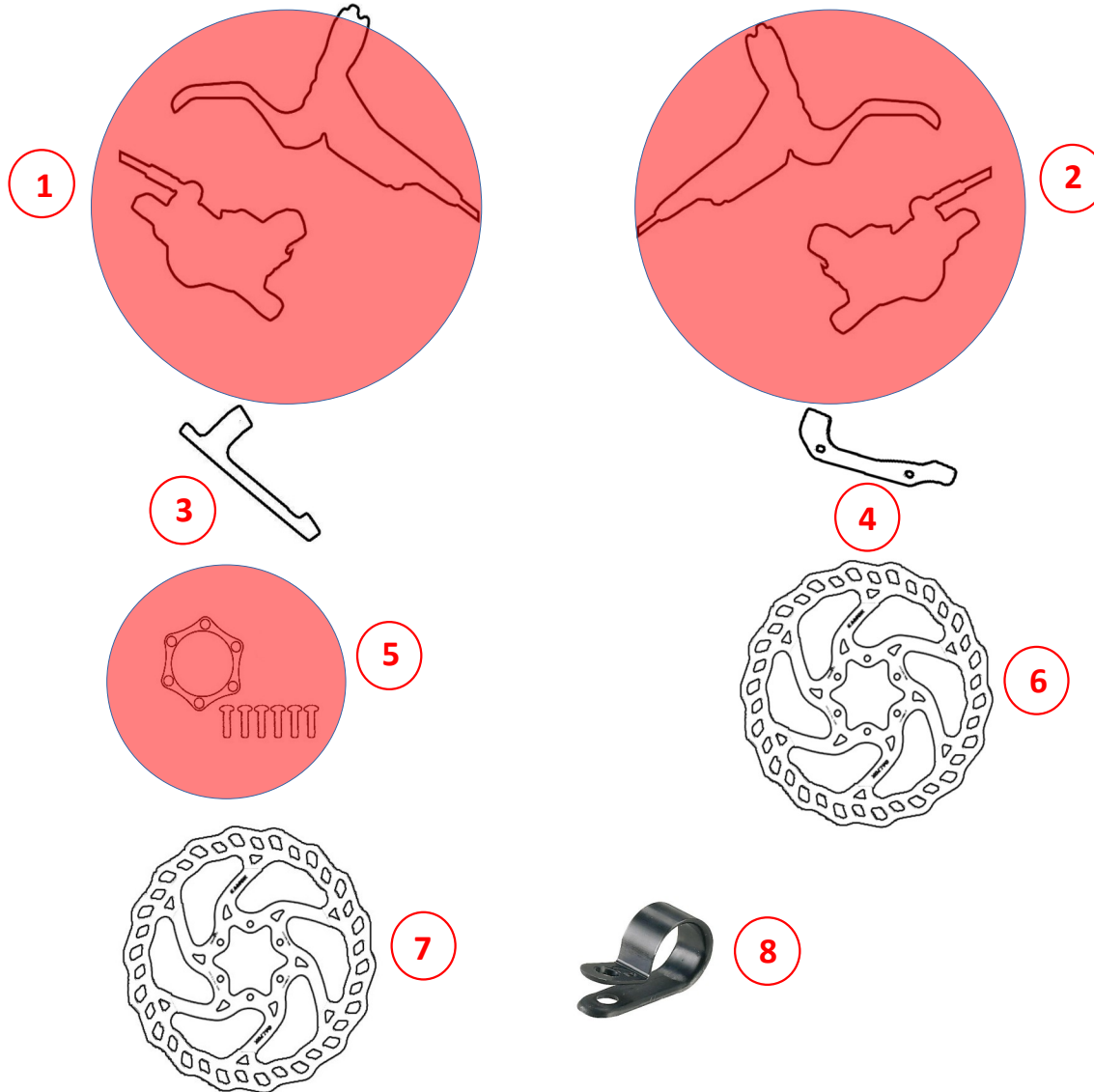
TRANSMISSION PARTS			
No.	Part No.	Description	Quantity needed
1	RC700352	MAIN GEAR SPROCKET 52T	1
2	RC700501	CHAIN	1
3	DYC350300	UPPER CHAIN SLIDER	1
4	DYC350350	BOTTOM CHAIN SLIDER	1
5	RC700200	GEAR SPROCKET 34T	1
6	RC700400	MAIN GEAR FRONT SPROCKET	1
7	RM700201	PRIMARY GEAR CHAIN	1
8	RM700112	ENGINE SPROCKET 12T	1
9	RM700130	CIRCLIP	1
10	DYC700250	PRIMARY CHAIN PROTECTOR FRAME	1
11	DYC700300	PRIMARY CHAIN PROTECTOR COVER	1
12	RC700150	MAIN GEAR FRONT SPROCKET BEARING	2

PLASTIC PARTS



PLASTIC PARTS			
No.	Part No.	Description	Quantity needed
1	DYC900200	FRONT MASK	1
2	DYC900000	FRONT FENDER	1
3	DYC100040	BATTERY FRONT COVER	1
4	DYC100100	CONTROLLER COVER	1
5	DYC120000	SEAT	1
6	DYC900500	REAR FENDER	1
7	DYC900600	SHOCK MUD PROTECTOR	1

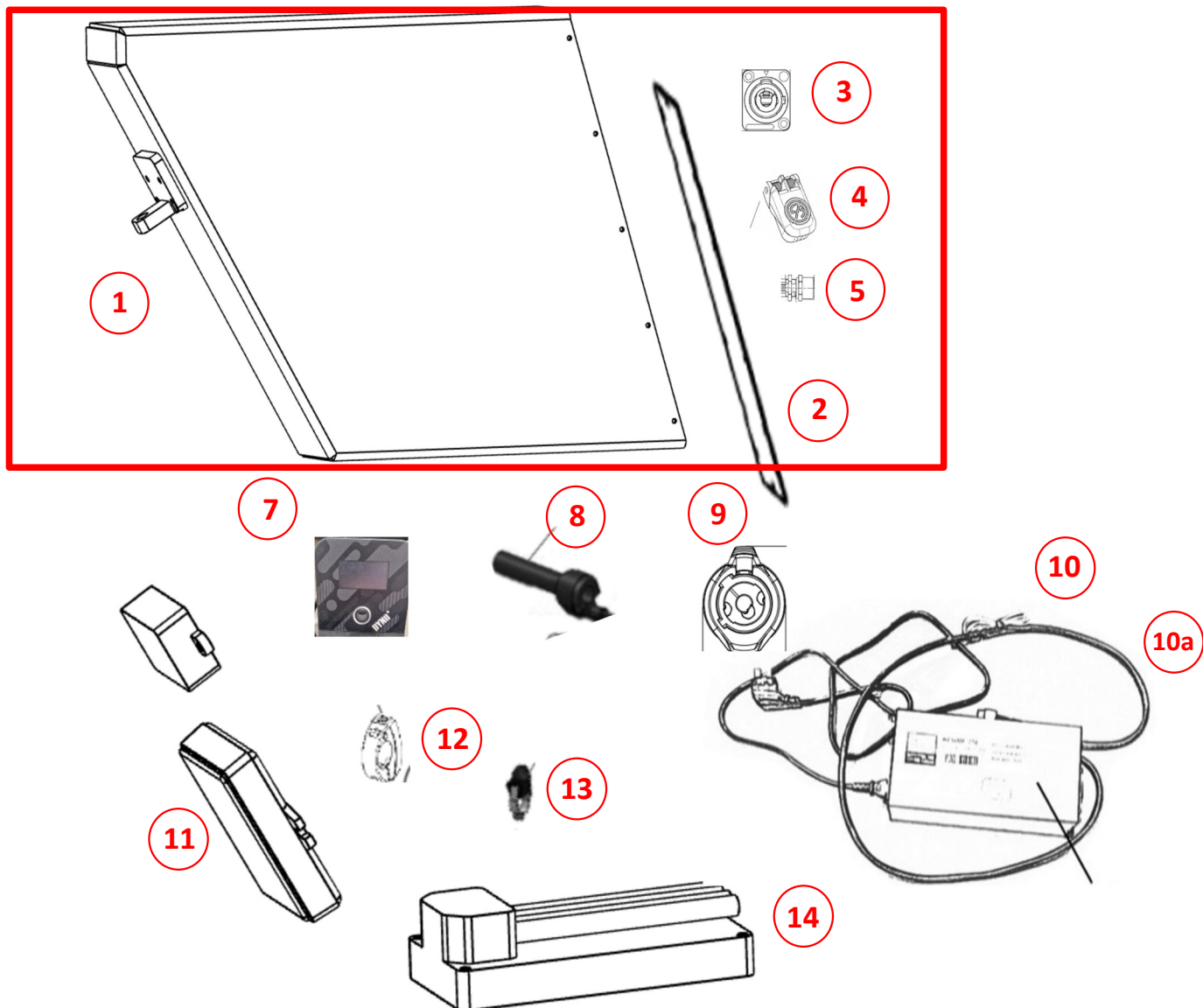
BRAKE PARTS





BRAKE PARTS			
No.	Part No.	Description	Quantity needed
1	RC245001	FRONT BRAKE KIT	1
2	RC345001	REAR BRAKE KIT	1
3	RC245130	FRONT BRAKE CALIPER ADAPTER	1
4	RC345002	REAR BRAKE CALIPER ADAPTER	1
5	RC245140	FRONT BRAKE DISC WASHER	1
6	RC345100	REAR BRAKE DISC	1
7	RC245101	FRONT BRAKE DISC	1
8	RC350050	REAR BRAKE HOSE HOLDER	3

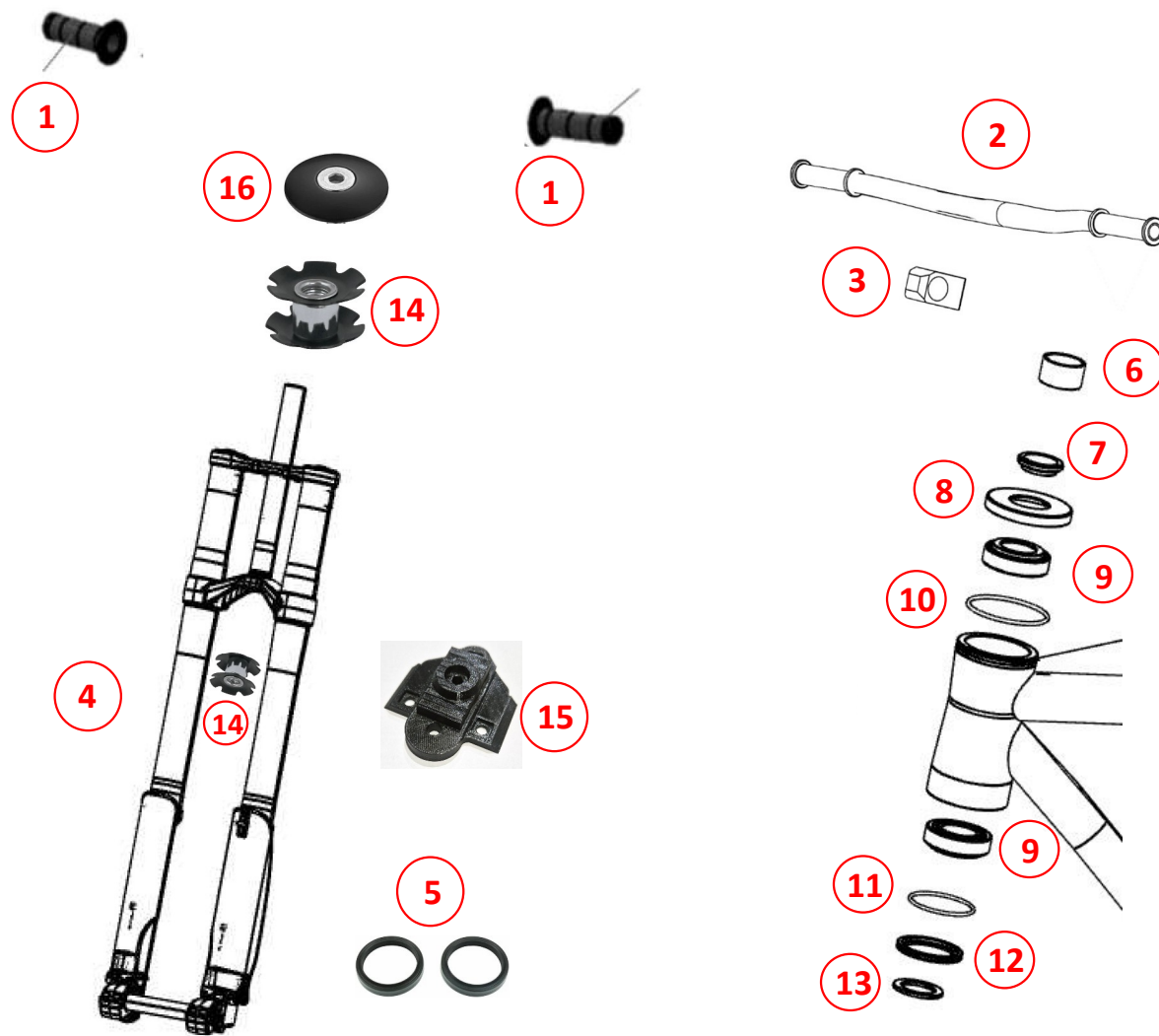
ELECTRIC PARTS





ELECTRIC PARTS			
No.	Part No.	Description	Quantity needed
1	DYE600000	BATTERY PACK	1
2	DYE600200	BATTERY REAR SIDE COVER (ONLY FOR AUTHORISED SERVICE PARTNERS)	1
3	RE601022	CHARGER CONECTOR (ONLY FOR AUTHORISED SERVICE PARTNERS)	1
4	DYE602300	CHARGER CONECTOR COVER (ONLY FOR AUTHORISED SERVICE PARTNERS)	1
5	DYE602000	CONTROLL CABLE CONECTOR (ONLY FOR AUTHORISED SERVICE PARTNERS)	1
7	DYE255100	DISPLAY WITH BRACKET	1
8	RE255101	TWIST GRIP DOMINO RBW (THROTTLE KIT)	1
9	RE681022	CHARGER CONNECTOR	1
10	RE680001	CHARGER 10A / 58.8V	1
10a	RE680003	CHARFER 15A / 58.8V	0
11	DYE255200	BIKE CONTROL UNIT (COMPUTER)	1
12	RE255053	MULTIFUNCTION ON/OFF SWITCH	1
13	RE255021	KILL SWITCH	1
14	RE650006	CONTROLLER	1

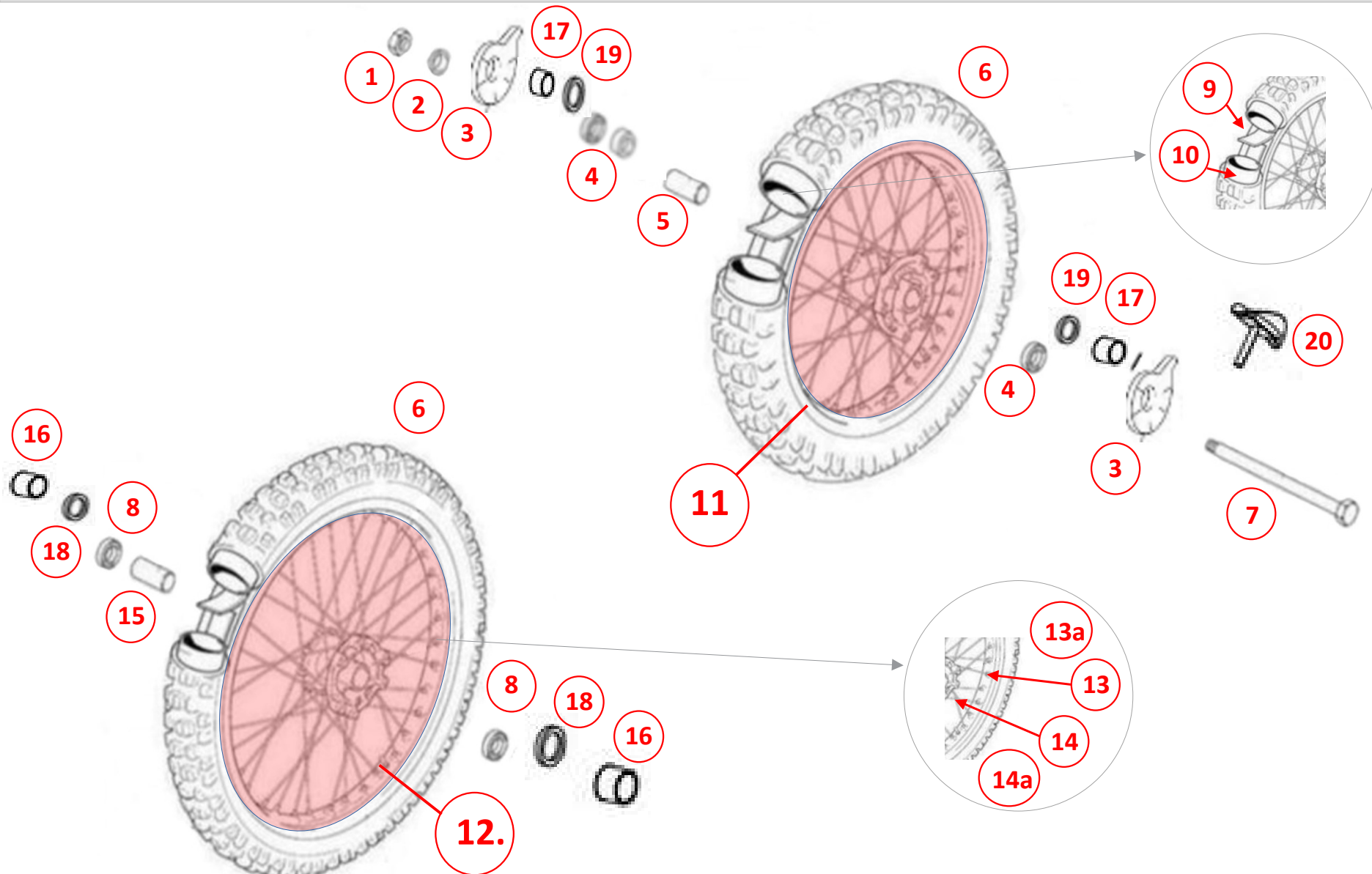
SUSPENSION PARTS





SUSPENSION PARTS			
No.	Part No.	Description	Quantity needed
1	RC255001	GRIPS KIT	1
2	RC250001	HANDLEBARS	1
3	RC250204	STEM	1
4	RC200005	FRONT FORKS MANITOU DORADO COMP 37MM	1
5	RC200102	SEALS KIT - MANITOU DORADO COMP 37MM	1
6	DYC101250	STEERING WASHER	1
7	DYC101150	DEMARCATIION PAD	1
8	DYC101100	BEARING COVER	1
9	DYC101000	BEARING	1
10	DYC101200	BEARING COVER	1
11	DYC102201	O-RING	1
12	DYC102101	BEARING COVER	1
13	DYC102150	LOWER BEARING WISHER	1
14	DYC101300	STAR NUT	1
15	DYC900100	FRONT FENDER HOLDER	1
16	DYC1012740	STEERING CAP	1

WHEELS PARTS





WHEELS PARTS			
No.	Part No.	Description	Quantity needed
1	DYC340070	REAR WHEEL AXIS NUT	1
2	DYC340060	REAR WHEEL AXLES WASHER	1
3	RC350201	CHAIN ADJUSTER KIT	1
4	RC340501	REAR WHEEL BEARING	3
5	RC340301	REAR WHEEL BEARING SPACER	1
6	RC240019	TYRE 100/70X19"	2
7	DYC340050	REAR WHEEL AXIS	1
8	RC240502	FRONT WHEEL BEARING	2
9	RC240219	TUBE PROTECTOR (FRONT/REAR)	2
10	RC240119	TUBE (FRONT/REAR)	2
11	RC341011	COMPLETE REAR WHEEL (RIM, SPOKES, HUB)	1
12	RC240011	COMPLETE FRONT WHEEL (RIM, SPOKES, HUB)	1
13	RC241101	FRONT WHEEL SPOKE NIPPLE	32
13a	RC341101	REAR WHEEL SPOKE NIPPLE	32
14	RC241106	FRONT WHEEL SPOKE	32
14a	RC341105	REAR WHEEL SPOKE	32
15	RC240301	FRONT WHEEL BEARING SPACER	1
16	RC240302	FRONT WHEEL SPACER	2
17	RC340302	REAR WHEEL SPACER	2
18	RC541101	FRONT WHEEL SEAL	2
19	RC591100	REAR WHEEL SEAL	2
20	RC341130	REAR TYRE HOLDER	1

Welcome

Thank you for purchasing Czech Electric Motorcycle **DYNO^M**. We appreciate your trust in our product.

Adhering to the guidelines in this manual is important in order to enjoy your **DYNO^M** experience. Read the manual carefully before the first use. Also refer to the manual if there occur any problems or uncertainties using **DYNO^M**.

DYNO^M is a powerful and entertaining machine with which you can enjoy every moment of your ride. However, ill-treatment can endanger your health or your life. Always drive carefully, wear the protection helmet, gloves, goggles and other proper clothing and safety equipment. Be aware that you will drive a fast and quiet machine. Be considerate to your surroundings and pay attention not only to your safety but to others too.

This manual shall advise you how to keep the motorcycle in perfect condition. We recommend that you purchase only original spare parts exclusively from your **DYNO^M** dealer. Pay special attention to the safety instructions. If you are still unsure after reading this manual, do not hesitate to contact your **DYNO^M** dealer.

The User's Manual contains important technical and safety information about the **DYNO^M**. This machine is designed for private recreational use, it is not intended for professional sport.

All information in this manual is non-binding. **DYNO^M** manufacturer reserves the right to make changes without prior notice and without giving reasons to make changes to the technical specifications, such as colour, construction, equipment and use of materials. Furthermore, the company acquires the right to adapt motorcycles to local conditions, market requirements and possibly stop the production of certain models without prior review.

DYNO^M manufacturer is not responsible for the availability of vehicles, the differences between pictures or machine descriptions, or for errors or omissions in this manual. The models shown include some special equipment, which is not included in the standard equipment.



SPARE PARTS CATALOGUE

Exac, Ltd., Zbraslavská 27, 159 00 PRAHA 5 - Czech Republic
Reg. No.: 45 53 81 40, VAT No.: CZ 45 53 81 40